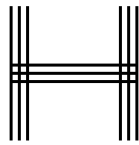


THE APARTMENTS



HEMPEL SQUARE

London W2

THE APARTMENTS — ELEVATION



Twelve stunning apartments – two, three,
and four bedrooms.

Apartment I

3 BEDROOM DUPLEX APARTMENT

APPROX. AREA
1,921 SQ. FT. (178.5 SQ. M.)
GROUND FLOOR



OUTSIDE SPACE
PRIVATE ENTRANCE

Apartment I

LOWER GROUND FLOOR

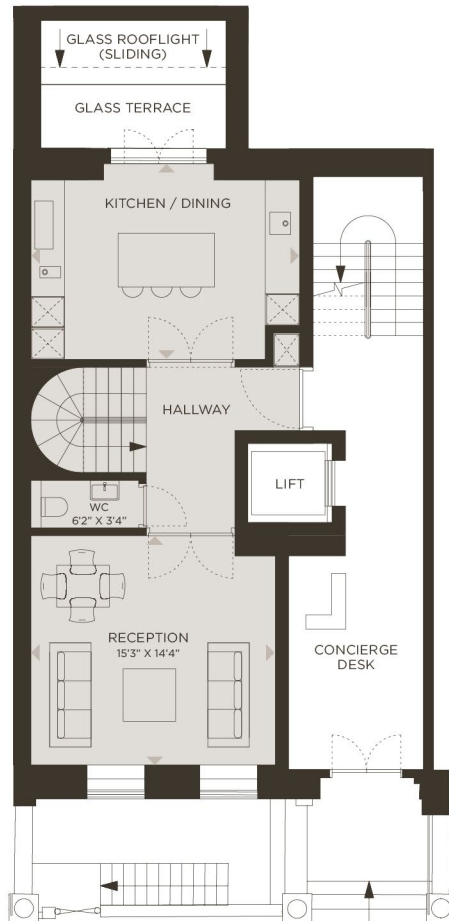


OUTSIDE SPACE
PRIVATE ENTRANCE

Apartment 2

3 BEDROOM DUPLEX APARTMENT

APPROX. AREA
1,707 SQ. FT. (158.6 SQ. M.)
GROUND FLOOR



N



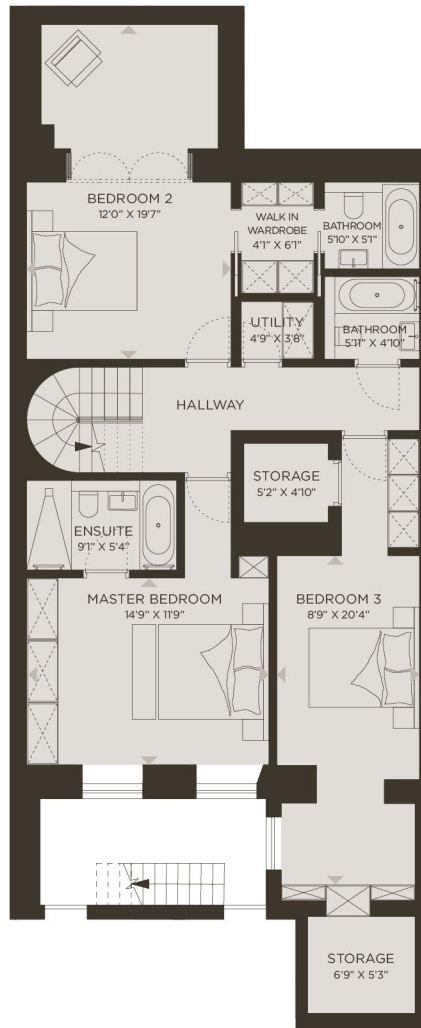
MAX. CEILING HEIGHT

8'7"/8'2"

(2.61 M./2.50 M.)

Apartment 2

LOWER GROUND FLOOR

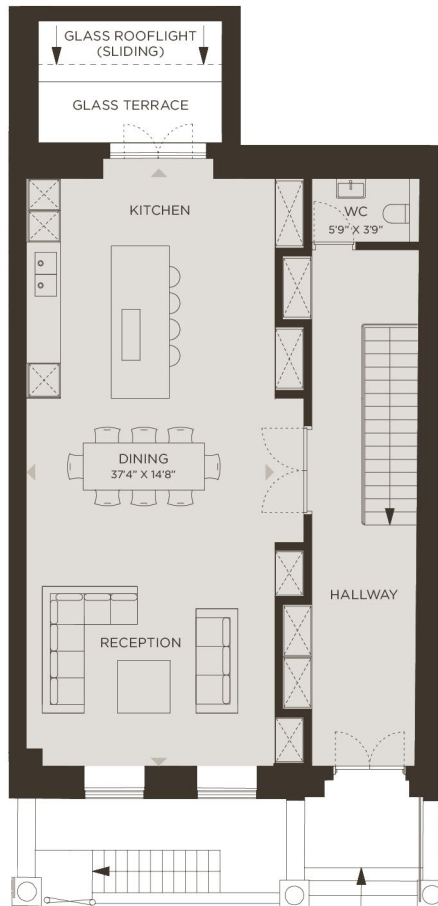


OUTSIDE SPACE

Apartment 3

3 BEDROOM DUPLEX APARTMENT

APPROX. AREA
1,970 SQ. FT. (183 SQ. M.)
GROUND FLOOR



N



MAX. CEILING HEIGHT

8'5"/8'6"

(2.56 M./2.59 M.)

Apartment 3



OUTSIDE SPACE
PRIVATE ENTRANCE

Apartment 4

4 BEDROOM LATERAL DUPLEX APARTMENT

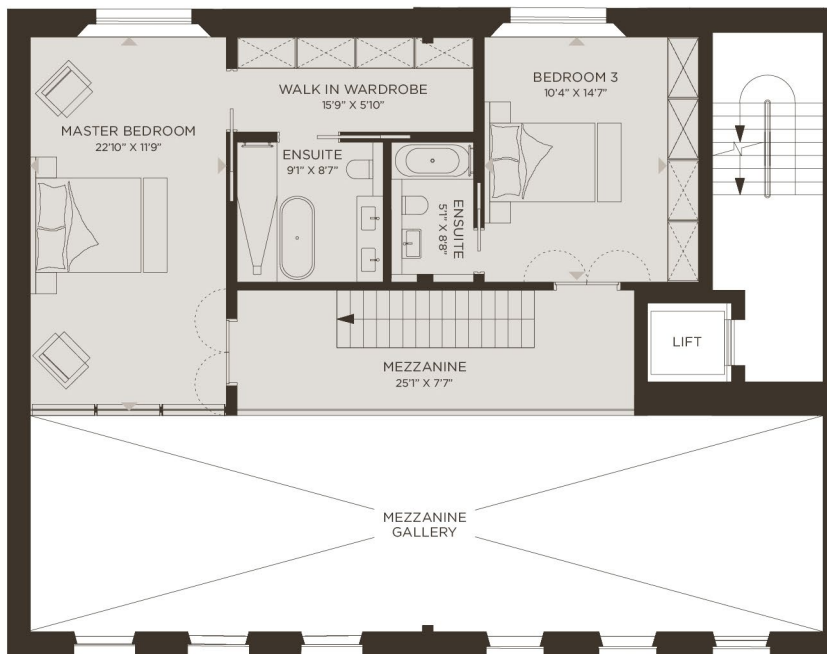
APPROX. AREA
2,519 SQ. FT. (234 SQ. M.)
FIRST FLOOR



MAX. CEILING HEIGHT
7'6" / 16'9" / 8'6"
(2.30 M. / 5.10 M. / 2.59 M.)

Apartment 4

MEZZANINE FLOOR



Apartment 5

2 BEDROOM LATERAL DUPLEX APARTMENT

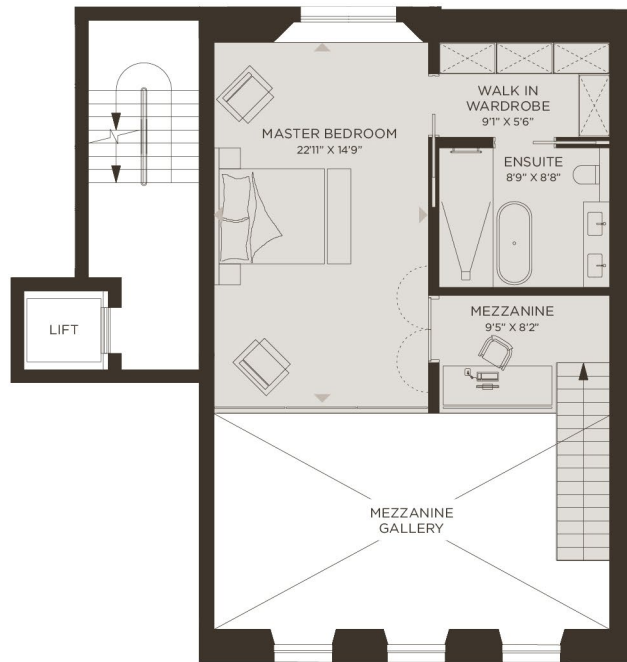
APPROX. AREA
1,510 SQ. FT. (140.3 SQ. M.)
FIRST FLOOR



MAX. CEILING HEIGHT
7'6" / 17'0" / 8'5"
(2.30 M. / 5.18 M. / 2.56 M.)

Apartment 5

MEZZANINE FLOOR



Apartment 6

3 BEDROOM LATERAL APARTMENT

APPROX. AREA
1,808 SQ. FT. (168 SQ. M.)
SECOND FLOOR



N



MAX. CEILING HEIGHT

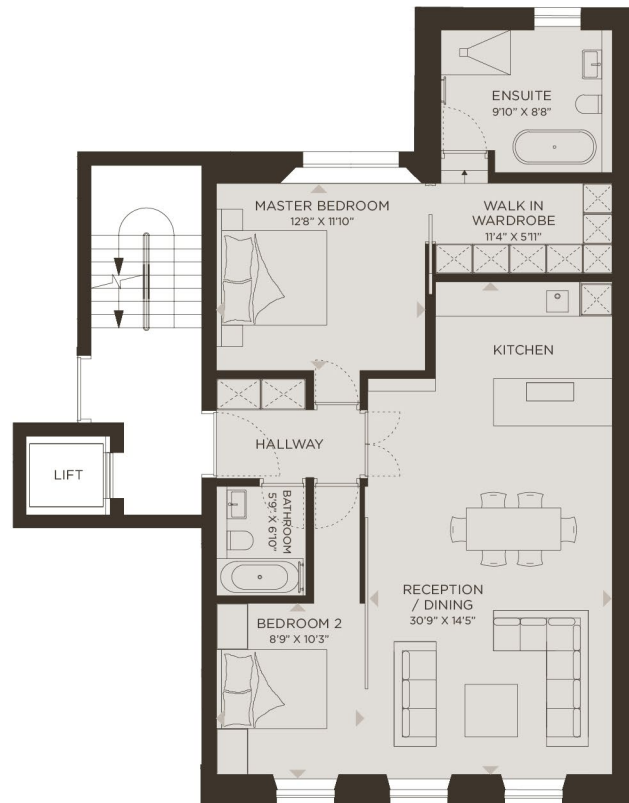
8'2" / 8'7"

(2.49 M. / 2.62 M.)

Apartment 7

2 BEDROOM LATERAL APARTMENT

APPROX. AREA
992 SQ. FT. (92.2 SQ. M.)
SECOND FLOOR



N



MAX. CEILING HEIGHT

8'0" / 8'6"

(2.45 M. / 2.62 M.)

Apartment 8

3 BEDROOM LATERAL APARTMENT

APPROX. AREA
1,629 SQ. FT. (151.3 SQ. M.)
THIRD FLOOR



N



MAX. CEILING HEIGHT

8'2" / 8'7"

(2.50 M. / 2.62 M.)

Apartment 9

2 BEDROOM LATERAL APARTMENT

APPROX. AREA

901 SQ. FT. (83.7 SQ. M.)

THIRD FLOOR



N



MAX. CEILING HEIGHT

8'0" / 8'6"

(2.46 M. / 2.58 M.)

Apartment 10

3 BEDROOM LATERAL APARTMENT

APPROX. AREA

1,614 SQ. FT. (150 SQ. M.)

FOURTH FLOOR



N



MAX. CEILING HEIGHT

8'0" / 8'6"

(2.45 M. / 2.58 M.)

Apartment II

2 BEDROOM LATERAL APARTMENT

APPROX. AREA

894 SQ. FT. (83.1 SQ. M.)

FOURTH FLOOR



N



MAX. CEILING HEIGHT

8'0" / 8'6"

(2.45 M. / 2.58 M.)

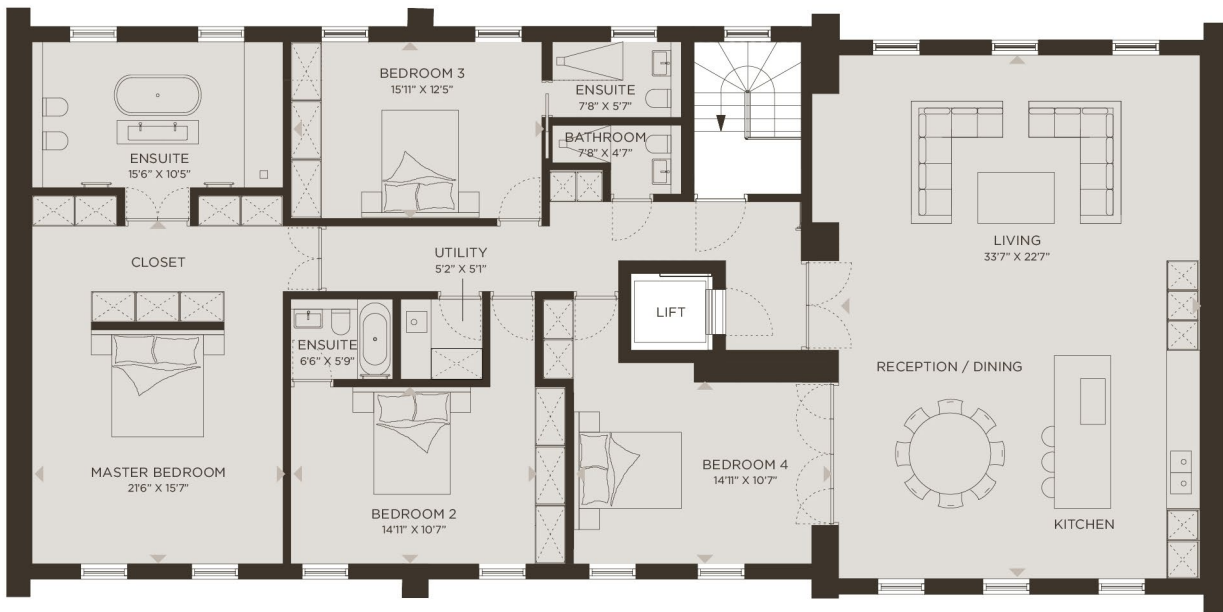
The Penthouse – Hempel Square

4 BEDROOM LATERAL PENTHOUSE APARTMENT

APPROX. AREA

2,354 SQ. FT. (218.7 SQ. M.)

FIFTH FLOOR



N



MAX. CEILING HEIGHT

9'1" / 11'9"

(2.77 M. / 3.59 M.)

Amazon Property is a specialist in luxury prime central London residential schemes. British Land is a leading developer in the UK. Together, they are delivering the remarkable homes of The Hempel Collection.



Knight Frank/Strutt & Parker for themselves and for vendors or lessors of this property whose agents they are give notice that: (i) the particulars are set out as a general outline only for the guidance of intended purchasers or lessees, and do not constitute, nor constitute any part of, an offer of contract; (ii) all descriptions, dimensions, reference to condition and necessary permissions for use and occupation, and other details are given without responsibility and any intending purchasers or tenants should not rely on them as statements or representations of fact but must satisfy themselves by inspection or otherwise as to the correctness of each of them; (iii) no person in the employment of Knight Frank/Strutt & Parker has any authority to make or give any representation or warranty whatever in relation to this property.
September 2014. Design by Egelnick and Webb